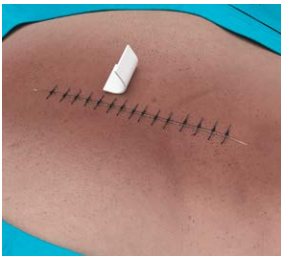


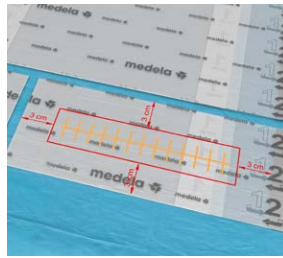
Closed surgical incisions

Dressing Application Guide

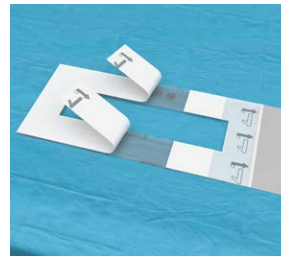
Invia® Foam Dressing Kit with FitPad (For straight closed surgical incisions of 25 cm and smaller)



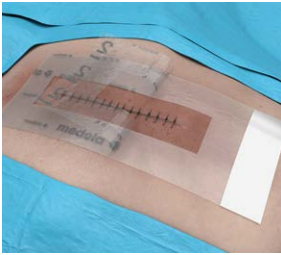
1. Clean and dry application site per physician's order. Apply skin prep to protect the peri-incisional skin.



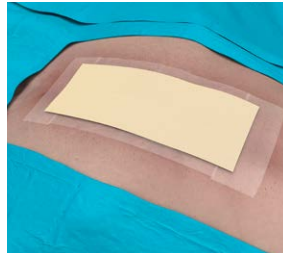
2. Cut Transparent Film to size to allow coverage of approx. 3 cm beyond the incision.



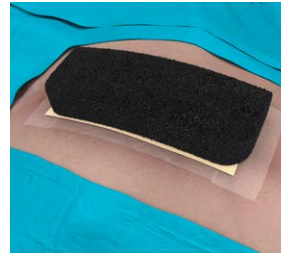
3. Cut window in size of incision in Transparent Film. Remove central layer "1" of the film.



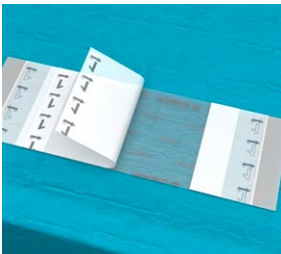
4. Place adhesive side down with window over incision. Remove side layer "1", top layer "2" and detach silver colored handling bar.



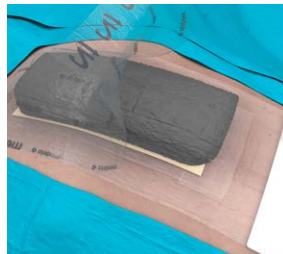
5. Protect the entire incision line with a non adherent contact layer. Extend this by at least 2.5 cm at either end of the incision.



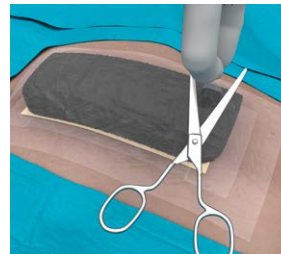
6. Cut the foam into minimum 5 cm wide strips. Place over contact layer to cover at least 2.5 cm over either end of the incision.



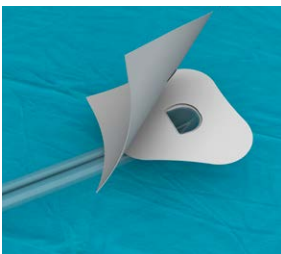
7. Cut the Transparent Film to allow for coverage 3–5 cm beyond the foam strips. Remove central layer "1" of the film.



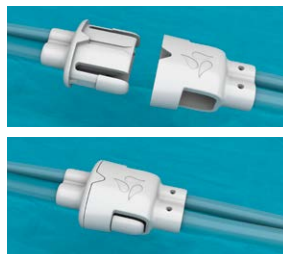
8. Apply Transparent Film over the full surface of foam, extending around intact skin and remove further layer as described in step 4.



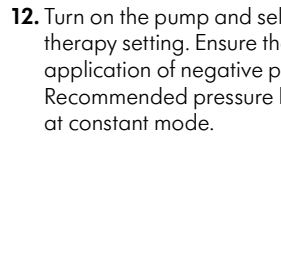
9. Select appropriate location for the FitPad. Pinch film and cut small hole (approx. 1 cm).



10. Peel off the backing of the FitPad and center the FitPad over the previously cut hole. Press firmly for adherence.



11. Connect the dressing tubing to the pump tubing by pushing the Quick-connector together until you hear a click.



12. Turn on the pump and select prescribed therapy setting. Ensure the foam collapses after application of negative pressure. Recommended pressure level is -125mmHg at constant mode.



The Invia Foam Dressing Kit with FitPad is intended to be used in conjunction with the Invia Motion and Invia Liberty Negative Pressure Wound Therapy Systems (NPWT).



For maximal benefit on closed surgical incision, the Invia negative pressure therapy should be applied immediately post-surgery to clean closed wounds. It is to be continuously applied for a minimum of two days up to a maximum of seven days with regular dressing changes every 48 to 72 hours.



This Quick Card does not replace the instructions for use REF 200.8923.

Closed surgical incisions

Dressing Application Guide

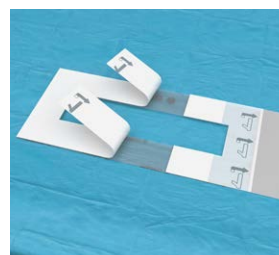
Invia® Gauze Dressing Kit with FitPad (For straight closed surgical incisions of 25 cm and smaller)



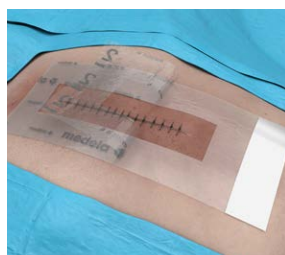
1. Clean and dry application site per physician's order. Apply skin prep to protect the peri-incisional skin.



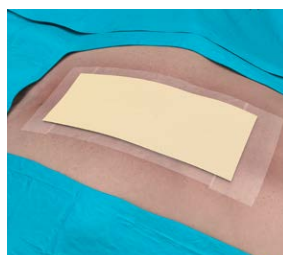
2. Cut Transparent Film to size to allow coverage of approx. 3 cm beyond the incision.



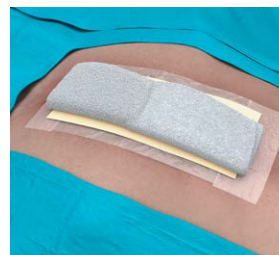
3. Cut window in size of incision in Transparent Film. Remove central layer "1" of the film.



4. Place adhesive side down with window over incision. Remove side layer "1", top layer "2" and detach silver colored handling bar.



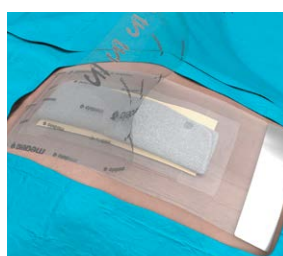
5. Protect the entire incision line with a non adherent contact layer. Extend this by at least 2.5 cm at either end of the incision.



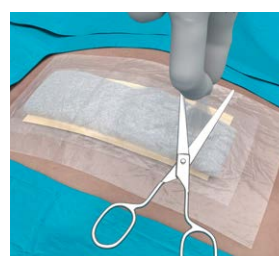
6. Cut or fold the gauze into minimum 5 cm wide strips. Place over contact layer to cover at least 2.5 cm over either end of the incision.



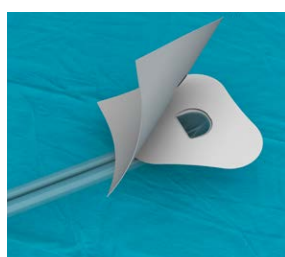
7. Cut the Transparent Film to allow for coverage 3-5 cm beyond the gauze strips. Remove central layer "1" of the film.



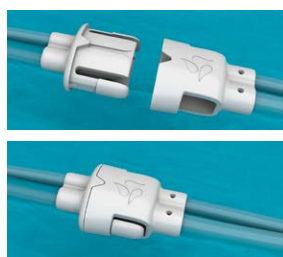
8. Apply Transparent Film over the full surface of gauze, extending around intact skin and remove further layer as described in step 4.



9. Select appropriate location for the FitPad. Pinch film and cut small hole (approx. 1 cm)



10. Peel off the backing of the FitPad and center the FitPad over the previously cut hole. Press firmly for adherence.



11. Connect the dressing tubing to the pump tubing by pushing the Quick-connector together until you hear a click.

12. Turn on the pump and select prescribed therapy setting. Ensure the gauze collapses after application of negative pressure. Recommended pressure level is -125 mmHg at constant mode.

⚠ The Invia Gauze Dressing Kit with FitPad is intended to be used in conjunction with the Invia Motion and Invia Liberty Negative Pressure Wound Therapy Systems (NPWT).

⚠ For maximal benefit on closed surgical incision, the Invia negative pressure therapy should be applied immediately post-surgery to clean closed wounds. It is to be continuously applied for a minimum of two days up to a maximum of seven days with regular dressing changes every 48 to 72 hours.

⚠ This Quick Card does not replace the instructions for use REF 200.9065.

Please contact us or your local Medela representative for details.

CAUTION: U.S. Federal law restricts this device to sale by or on the order of a physician.

 Medela AG
Lättichstrasse 4b
6340 Baar
Switzerland
www.medela.com

USA
Medela LLC
1101 Corporate Drive
McHenry, IL 60050
USA
Phone +1 877 735 1626
Fax +1 815 307 8942
info-healthcare@medela.com

Canada
Medela Canada Inc.
4160 Sladeview Cres., Unit #8
Mississauga, ON
L5L 0A1, Canada
Phone +1 800 435 8316
Fax +1 800 995 7867
info@medela.ca

Local contact