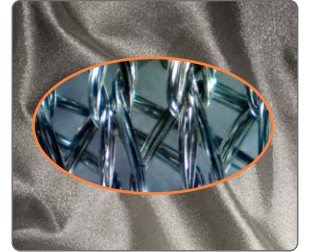


Invia® Silverlon® NPWT

Antimicrobial Wound Contact Dressing

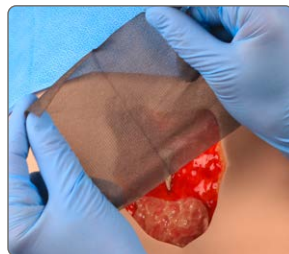
Application guide with the **Invia® Foam Dressing Kit with FitPad**



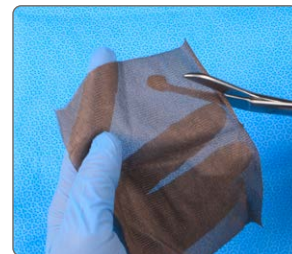
This Quick Card does not replace the instructions for use REF 200.9851 and 200.8923



1. Cleanse wound with normal saline, distilled water, or sterile water. Remove necrotic debris or eschar as needed.



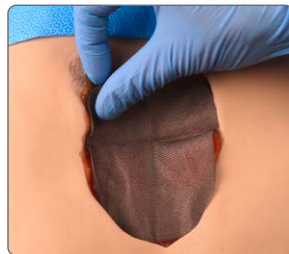
2. Select the appropriate size of Invia Silverlon dressing that will fully cover the wound. (10 x 12 cm or 12 x 20 cm)



3. Trim the dressing as needed to ensure the dressing is in full contact with the wound bed, edges, or undermining.



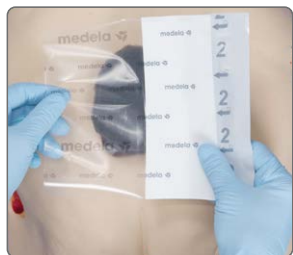
4. Activate the dressing by thoroughly moistening with normal saline, distilled water or sterile water.



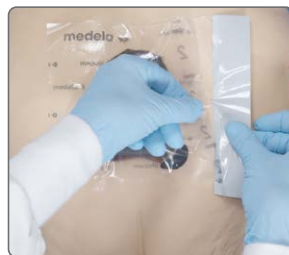
5. Place the Invia Silverlon dressing directly over the wound. Ensure dressing is in direct contact with the wound bed and edges. Either side can be used.



6. Cut the foam to the size and shape of the wound bed. **Place foam over contact dressing.** Do not pack tightly.



7. Cover foam with transparent film. Partially peel back one side of layer 1. Place the adhesive side down over the wound and remove the other part of layer 1.



8. Now remove the transparent backing film labeled 2.



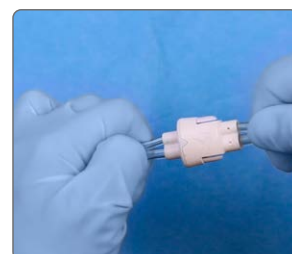
9. Remove the perforated silver colored tab on the side. The film should extend 3–5 cm beyond the wound margin to facilitate adequate seal.



10. Select appropriate location for the external suction pad (FitPad) to be applied. Pinch the film and cut a small hole (approx. 1 cm).



11. Peel off the backing of the FitPad to expose the adhesive and place over the previously cut hole in the dressing. Press firmly for adherence.



12. Attach the dressing tubing to the pump tubing by pushing the **Quick-connector** together until you hear a click.

Invia Silverlon contact dressings may stay in place for up to 3 days.

Replace contact dressing when the NPWT dressing is changed.

Do not use Invia Silverlon on patients with sensitivity to silver or nylon.

Do not use on 3rd degree burns.

Do not use petroleum based products or creams under Invia Silverlon Dressings.

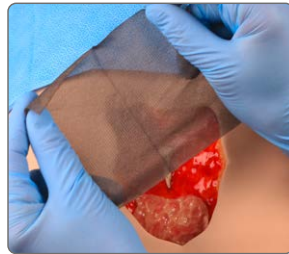
Do not moisten Invia Silverlon Dressings with hydrogen peroxide or povidone iodine.

Invia® Silverlon® NPWT Antimicrobial Wound Contact Dressing
Application guide with the Invia® Gauze Dressing Kit with FitPad

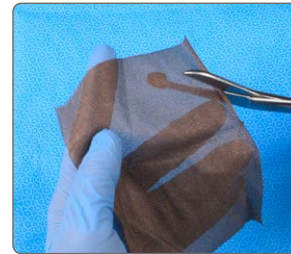
This Quick Card does not replace the instructions for use REF 200.9851 and 200.9065



1. Cleanse wound with normal saline, distilled water, or sterile water. Remove necrotic debris or eschar as needed.



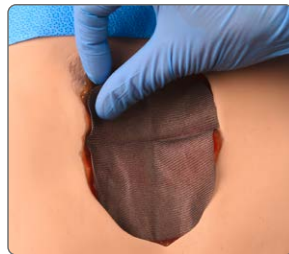
2. Select the appropriate size of Invia Silverlon dressing that will fully cover the wound. (10 x 12 cm or 12 x 20 cm)



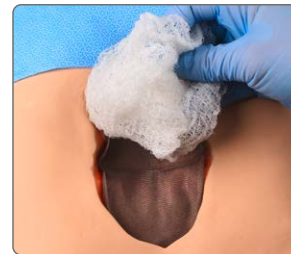
3. Trim the dressing as needed to ensure the dressing is in full contact with the wound bed, edges, or undermining.



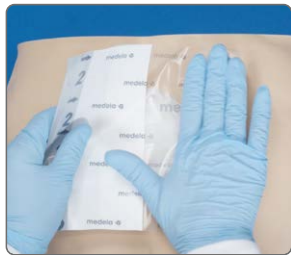
4. Activate the dressing by thoroughly moistening with normal saline, distilled water or sterile water.



5. Place the Invia Silverlon dressing directly over the wound. Ensure dressing is in direct contact with the wound bed and edges. Either side can be used.



6. Saturate gauze with saline. **Place over the contact dressing.** The gauze should fill the wound cavity. Do not pack tightly.



7. Cover gauze with film. Partially peel back one side of layer 1. Place the adhesive side down over the wound and remove the other part of layer 1.



8. Now remove the transparent backing film labeled 2



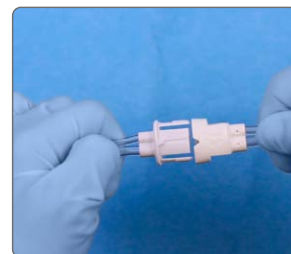
9. Remove the perforated silver colored tab on the side(s).



10. Select appropriate location for the external suction interface FitPad. **Cut a small hole** in the transparent film, no more than 1 cm in diameter.



11. Peel off the backing of the **FitPad** to expose the adhesive and **place over** the **previously cut hole** in the dressing. Press firmly for adherence.



12. Attach the dressing tubing to the pump tubing by pushing the **Quick-connector** together until you hear a click.

Invia Silverlon contact dressings may stay in place for up to 3 days.

Replace contact dressing when the NPWT dressing is changed.

Do not use Invia Silverlon on patients with sensitivity to silver or nylon.

Do not use on 3rd degree burns.

Do not use petroleum based products or creams under Invia Silverlon Dressings.

Do not moisten Invia Silverlon Dressings with hydrogen peroxide or povidone iodine.

Please contact us or your local Medela representative for details.

CAUTION: U.S. Federal law restricts this device to sale by or on the order of a physician.

Argentum Medical LLC
2571 Kaneville Court, Geneva,
Illinois 60134, USA
Phone +1 630 232 2507
Fax +1 630 232 8005

Distributed by:
Canada
Medela Canada Inc.
4160 Sladeview Cres., Unit #8
Mississauga, ON
L5L 0A1, Canada
Phone +1 800 435 8316
Fax +1 800 995 7867
info@medela.ca

USA
Medela LLC
1101 Corporate Drive
McHenry, IL 60050, USA
Phone +1 877 735 1626
Fax +1 815 307 8942
info-healthcare@medela.com