

# Dressing Application Guide

## Invia® Foam Dressing Kit with FitPad: Bridging the FitPad

Two wounds of similar etiology may be bridged utilizing one dressing kit



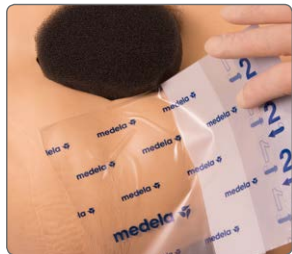
**1. Thoroughly clean and debride the wound.**  
Apply skin prep to protect the peri-wound skin.



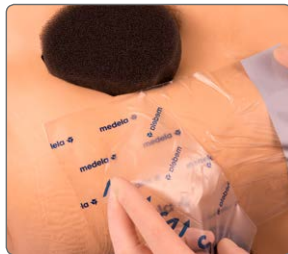
**2. Cut the foam** to fit the size and shape of the wound. Do not cut directly over the wound. Rub the edges of the foam to remove any loose particles.



**3. Place the foam** into the wound cavity. Do not tightly pack or force foam into areas of the wound. Do not allow the foam to overlap onto intact skin.



**4. Select an area to relocate the FitPad** (non-weight bearing area). **Apply transparent film** over any intact skin between the wound and the relocation site.



**5. Partially peel back** one side of layer 1, and place the adhesive side down. Now remove the transparent backing labeled 2. Finally remove the perforated silver colored tab on the side.



**6. Cut a foam "bridge", 3 cm wide,** that will be long enough to connect the wound with the relocation site (maximum **40 cm long**). Ensure the "bridge" is large enough to accommodate the FitPad at the relocation site.



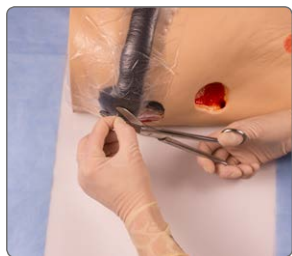
**7. Apply the "bridge"** on the transparent film between wound and relocation site. Ensure it has good contact with the foam in the wound and has no contact with unprotected skin.



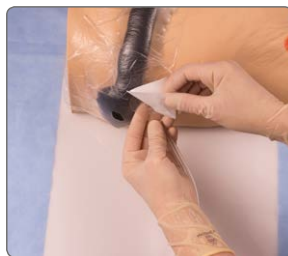
**8. Apply transparent film to cover all of the foam:** wound and the "bridge" foam. Follow the film application instructions described under step 5.



**9. Multiple pieces of film can be used.** The film should extend 3–5 cm beyond the margin of the foam dressing to facilitate an adequate seal.




**10. Select a central area to place the FitPad on the relocation site.** Pinch the film lifting slightly and cut a small hole (approx. 1 cm).





**11. Peel off the backing of the FitPad** to expose the adhesive. **Place the FitPad** centered over the previously cut hole. Press firmly for adherence.



**12. Attach the dressing tubing** to the pump tubing by pushing the **Quick-connector** together until you hear a click.

 The Invia Foam Dressing Kit with FitPad is intended to be used in conjunction with the Invia Motion and Invia Liberty Negative Pressure Wound Therapy Systems (NPWT).

 Invia NPWT instructions advise 24 hour therapy without interruption. If therapy is discontinued for more than 2 hours, the dressing should be replaced and therapy restarted by a healthcare professional.

 This Quick Card does not replace the instructions for use REF 200.8923.

# Dressing Application Guide

## Invia® Foam Dressing Kit with FitPad: Bridging two wounds



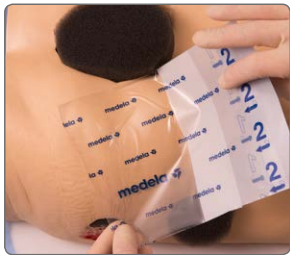
**1. Thoroughly clean and debride the wounds.**  
Apply skin prep to protect the peri-wound skin.



**2. Cut the foam** to fit the size and shape of the two wounds. Do not cut directly over the two wounds. Rub the edges of the foam to remove any loose particles.



**3. Place the foam** in each wound cavity. Do not tightly pack or force foam into areas of the wounds. Do not allow foam to overlap onto intact skin.



**4. Apply transparent film** over any intact skin between the two wounds: this is where your "bridge" will be placed.



**5. Partially peel back** one side of layer 1, and place the adhesive side down. Now remove the transparent backing labeled 2. Finally remove the perforated silver colored tab on the side.



**6. Cut a foam "bridge", 3 cm wide,** that will be long enough to connect the two wounds and touch the foam in both wounds (maximum 40 cm long).



**7. Connect the two wounds** by placing the foam "bridge" on the transparent film between the wounds. Ensure it has good contact with the foam in the wounds and has no contact with unprotected skin.




**8. Apply transparent film to cover all of the foam:** wound and the "bridge" foam. Follow the film application instructions described under step 5.



**9. Multiple pieces of film** can be used. The film should extend 3–5 cm beyond the margin of the foam dressing to facilitate an adequate seal.



**10. Select a central area** over one of the wounds to place the FitPad  (non-weight bearing area). Pinch the film lifting slightly and cut **cut a small hole** (approx. 1 cm).



**11. Peel off the backing** of the FitPad to expose the adhesive. **Place the FitPad** centered over the previously cut hole. Press firmly for adherence.



**12. Attach the dressing tubing** to the pump tubing by pushing the **Quick-connector** together until you hear a click.

Medical Vacuum Technology  
for Healthcare Professionals

Please contact us or your local Medela representative for details.

 Medela AG  
Lättichstrasse 4b  
6341 Baar, Switzerland  
www.medela.com

**International Sales**  
Medela AG  
Lättichstrasse 4b  
6341 Baar  
Switzerland  
Phone +41 41 562 51 51  
Fax +41 41 562 51 00  
ism@medela.ch  
www.medela.com

**UK**  
Medela UK Ltd.  
Huntsman Drive  
Northbank Industrial Park  
Irlam, Manchester M44 5EG  
United Kingdom  
Phone +44 161 776 0400  
Fax +44 161 776 0444  
info@medela.co.uk  
www.medela.co.uk



Local contact: