

Invia[®] NPWT Dressings

THERAPY CONFIDENCE WITH EASE



Therapy Confidence

- **Reliable** negative pressure delivery across the wound site¹
- **Intelligent** blockage detection¹ from pump to dressing
- **Secure**² tubing attachment with an audible click

Simplified Management

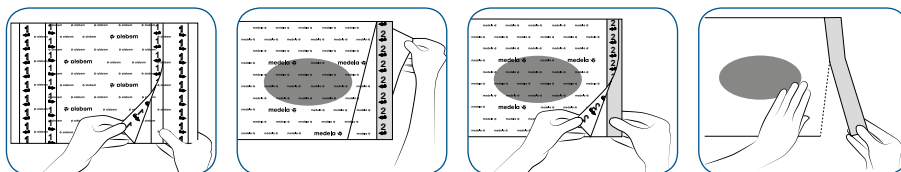
- **Convenient**² Quick-connecting tubing interface
- **Intuitive** transparent film handling
- **Easy** dressing application in difficult patient anatomy locations

Medela provides efficient solutions to support clinicians with Negative Pressure Wound Therapy management in all patient care settings

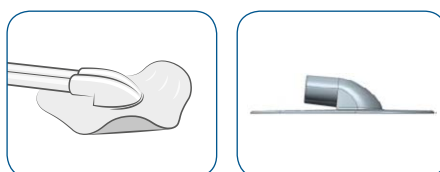
When using the dressing kits with FitPad in conjunction with the new Invia Negative Pressure Wound Therapy (NPWT) Systems, **be confident** of the **negative pressure delivered across the wound site**¹. Invia NPWT systems actively control set pressure at the wound site and adapt the flushing cycle to the amount of fluid in the tubing for optimal system performance.

Select the appropriate dressing **with ease** from our streamlined product offer. The dressing kits share the same transparent film and suction interface components; you only have to select the type of wound filler (foam or gauze) and the appropriate size.

Experience an **established application technique** thanks to the transparent film with intuitive markings.

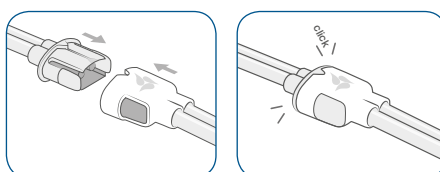


The **low profile design and flexible wings** of the suction interface (Invia FitPad) allow appropriate placement in difficult anatomic locations.



Overall height
8.5 mm
Wing thickness
0.45 mm

The **Quick-connecting** interface between the dressing tubing and canister tubing provides an **easy and secure** attachment².



Key features at a glance

- Active exudate management and pressure control from the pump to the wound site
- Easy application of transparent film and external suction interface
- Convenient and secure tubing attachment with the Quick-connector
- Streamlined foam and gauze dressings offer



Technical data

Foam Reticulated polyether and polyurethane, hydrophobic material	Pore size: 600–800 microns	Transparent Film Polyurethane film with acrylic adhesive	Size: 26 cm x 32 cm
	Tensile strength: 20 PSI/138 kPa		MVTR: 385 g/m ² /day
	PSI: Pounds per Square Inch		MVTR: Moisture Vapor Transmission Rate

Invia foam or gauze dressings are intended to be used in conjunction with the Invia Negative Pressure Wound Therapy (NPWT) Systems to deliver negative pressure to the wound.

Find out more about Medela NPWT Portfolio at www.medela.com

Medical Vacuum Technology for Healthcare Professionals

Please contact us or your local Medela representative for details.

Medela, Invia and Invia FitPad are trademarks of Medela Holding AG, Switzerland.

Local contact

Medela AG
Lättichstrasse 4b
6341 Baar, Switzerland
www.medela.com

United Kingdom
Medela UK Ltd.
Huntsman Drive
Northbank Industrial Park
Irlam, Manchester M44 5EG
United Kingdom
Phone +44 161 776 0400
Fax +44 161 776 0444
info@medela.co.uk
www.medela.co.uk

International Sales
Medela AG
Lättichstrasse 4b
6341 Baar
Switzerland
Phone +41 41 562 51 51
Fax +41 41 562 51 00
ism@medela.ch
www.medela.com

¹ Performance data on file at Medela AG
² Usability Validation data on file at Medela AG