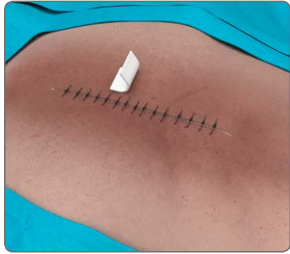


# Closed surgical incisions

## Dressing Application Guide

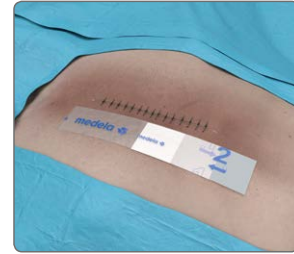
Invia® Foam Dressing Kit with FitPad



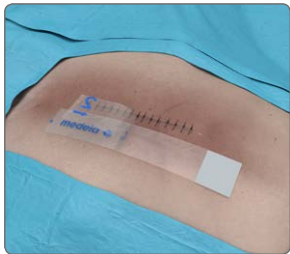
1. Clean and dry application site per physician's order. Apply skin prep to protect the peri-incisional skin.



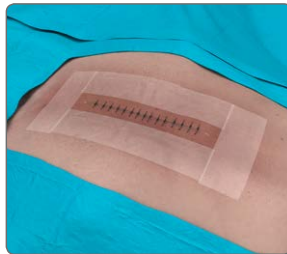
2. Cut a few strips (3 cm wide) from Transparent Film to protect the peri-incisional skin. Retain a portion of the handling bars on each piece.



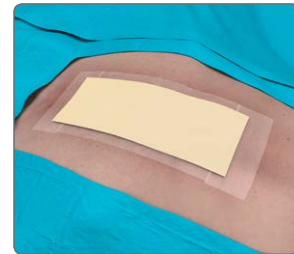
3. Apply strips. Partially peel back layer «1» and place the adhesive side down along the suture or staple line. Leave the suture line exposed.



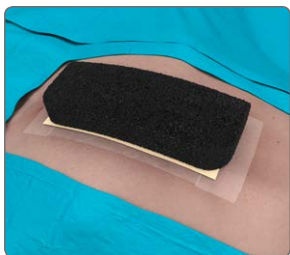
4. Remove side layer «1» and top layer «2» and detach silver colored handling bar.



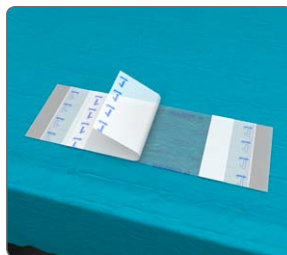
5. «Picture frame» the suture or staple line with Transparent Film as shown in the picture to protect the peri-incisional skin.



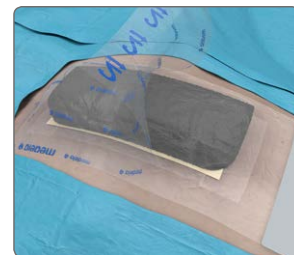
6. Protect the entire incision line with a non adherent contact layer. Extend this by at least 2.5 cm at either end of the incision.



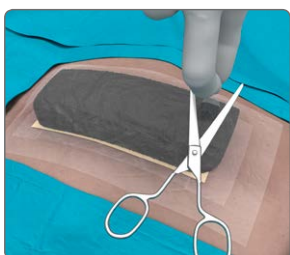
7. Cut the foam into minimum 5 cm wide strips. Place over contact layer to cover at least 2.5 cm over either end of the incision.



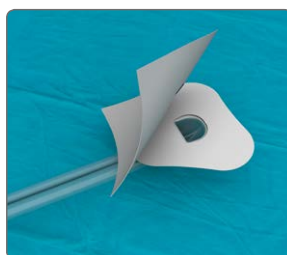
8. Cut the Transparent Film to allow for coverage 3–5 cm beyond the foam strips. Remove central layer «1» of the film.



9. Apply transparent film over the full surface of foam, extending around intact skin and remove further layer as described in step 4.



10. Select appropriate location for the FitPad. Pinch film and cut small hole (approx. 1 cm)



11. Peel off the backing of the FitPad and center the FitPad over the previously cut hole. Press firmly for adherence.



12. Connect the dressing tubing to the pump tubing by pushing the Quick-connector together until you hear a click

13. Turn on the pump and select prescribed therapy setting. Ensure the foam collapses after application of negative pressure. Recommended pressure level is -125mmHg at constant mode.



**The Invia Foam Dressing Kit with FitPad is intended to be used in conjunction with the Invia Motion and Invia Liberty Negative Pressure Wound Therapy Systems (NPWT).**



**For maximal benefit on closed surgical incision, the Invia negative pressure therapy should be applied immediately post-surgery to clean closed wounds. It is to be continuously applied for a minimum of two days up to a maximum of seven days with regular dressing changes every 48 to 72 hours.**

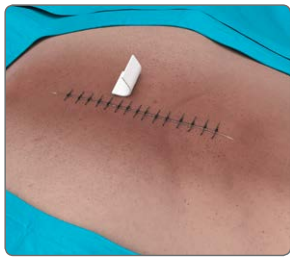


**This Quick Card does not replace the instructions for use REF 200.8923.**

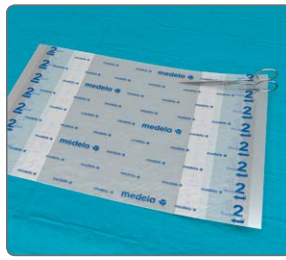
# Closed surgical incisions

## Dressing Application Guide

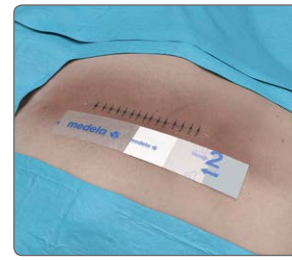
Invia® Gauze Dressing Kit with FitPad



1. Clean and dry application site per physician's order. Apply skin prep to protect the peri-incisional skin.



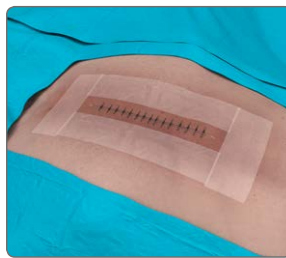
2. Cut a few strips (3 cm wide) from Transparent Film to protect the peri-incisional skin. Retain a portion of the handling bars on each piece.



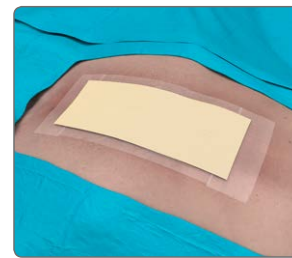
3. Apply strips. Partially peel back layer «1» and place the adhesive side down along the suture or staple line. Leave the suture line exposed.



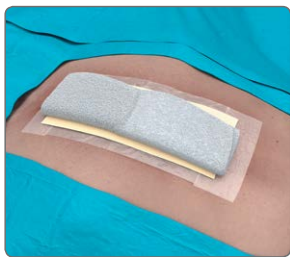
4. Remove side layer «1» and top layer «2» and detach silver colored handling bar.



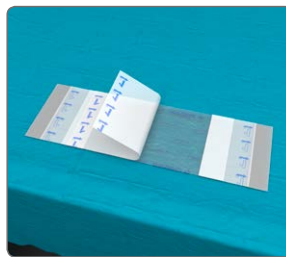
5. «Picture frame» the suture or staple line with Transparent Film as shown in the picture to protect the peri-incisional skin.



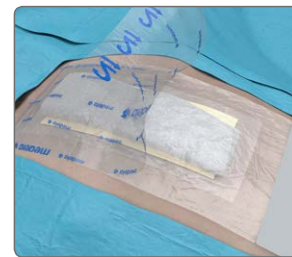
6. Protect the entire incision line with a non-adherent contact layer. Extend this by at least 2.5 cm at either end of the incision.



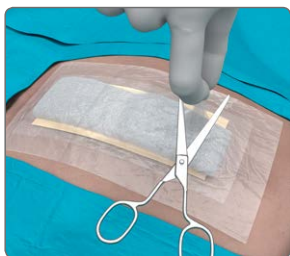
7. Cut or fold the gauze into minimum 5 cm wide strips. Place over contact layer to cover at least 2.5 cm over either end of the incision.



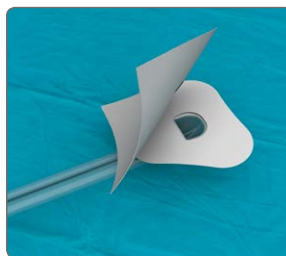
8. Cut the Transparent Film to allow for coverage 3–5 cm beyond the gauze strips. Remove central layer «1» of the film.



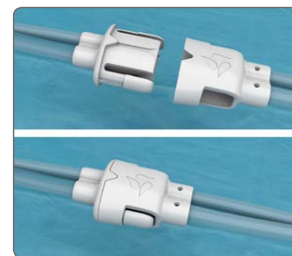
9. Apply transparent film over the full surface of gauze, extending around intact skin and remove further layer as described in step 4.



10. Select appropriate location for the FitPad. Pinch film and cut small hole (approx. 1 cm)



11. Peel off the backing of the FitPad and center the FitPad over the previously cut hole. Press firmly for adherence.



12. Connect the dressing tubing to the pump tubing by pushing the Quick-connector together until you hear a click.

13. Turn on the pump and select prescribed therapy setting. Ensure the gauze collapses after application of negative pressure. Recommended pressure level is -125mmHg at constant mode.



**The Invia Gauze Dressing Kit with FitPad is intended to be used in conjunction with the Invia Motion and Invia Liberty Negative Pressure Wound Therapy Systems (NPWT).**



**For maximal benefit on closed surgical incision, the Invia negative pressure therapy should be applied immediately post-surgery to clean closed wounds. It is to be continuously applied for a minimum of two days up to a maximum of seven days with regular dressing changes every 48 to 72 hours.**



**This Quick Card does not replace the instructions for use REF 200.9065.**

Medical Vacuum Technology  
for Healthcare Professionals

Please contact us or your local Medela representative for details.

Medela AG  
Lättichstrasse 4b  
6341 Baar, Switzerland  
www.medela.com

**International Sales**  
Medela AG  
Lättichstrasse 4b  
6341 Baar  
Switzerland  
Phone +41 41 562 51 51  
Fax +41 41 562 51 00  
www.medela.com

**United Kingdom**  
Medela UK Ltd.  
Huntsman Drive  
Northbank Industrial Park  
Irlam, Manchester M44 5EG  
United Kingdom  
Phone +44 161 776 0400  
Fax +44 161 776 0444  
info@medela.co.uk  
www.medela.co.uk

Local contact:

CE 0123