

Thopaz⁺™ Quick Card

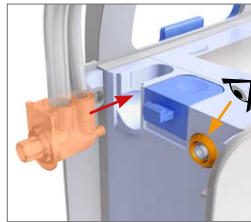


This Quick Card does not replace the instructions for use REF 200.6841 and refers to firmware 1.01

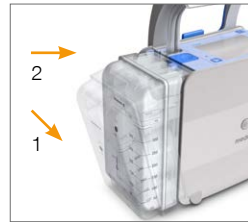
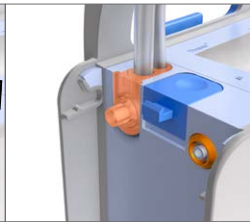
1. Assembly



1. Open sterile tubing packing
2. Keep patient connector in internal bag



3. Check presence of orange seal
4. Attach tubing

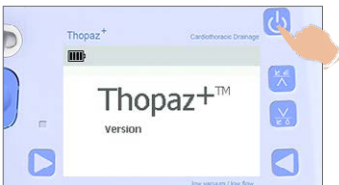


5. Insert bottom of canister first
6. Snap top of canister in place

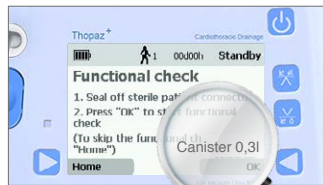


7. Thopaz⁺ System is connected and ready to switch on

2. Switch on

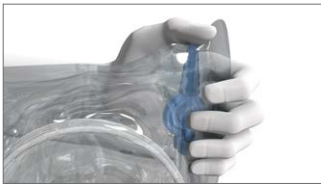


1. Switch Thopaz⁺ on
2. Confirm whether a new patient is connected or not

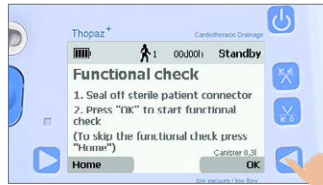


3. Check detected canister size (Wrong detection: Dispose canister)
4. Thopaz⁺ is ready for functional check

3. Perform functional check



1. Seal tubing (keep sterile)



2. Press "OK"
Test passed: Continue
Test failed: Follow guidance in instructions for use REF 200.6841



3. Connect the Thopaz⁺ System to the patient according to hospital guidelines
4. Press "On" to start the therapy

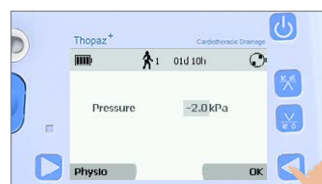
4. Adjust pressure during operation



1. Press simultaneously



2. Set desired pressure



3. Confirm with "OK"

5. Check therapy progress



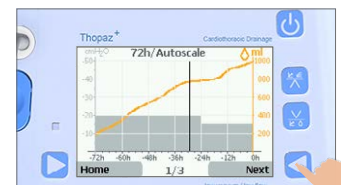
1. Check air leak history



2. Scroll with "Next" through air leak graphs

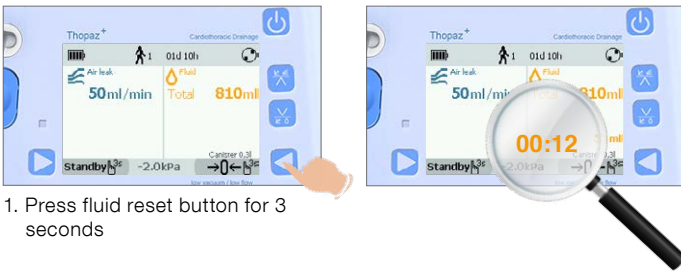


3. Check fluid history



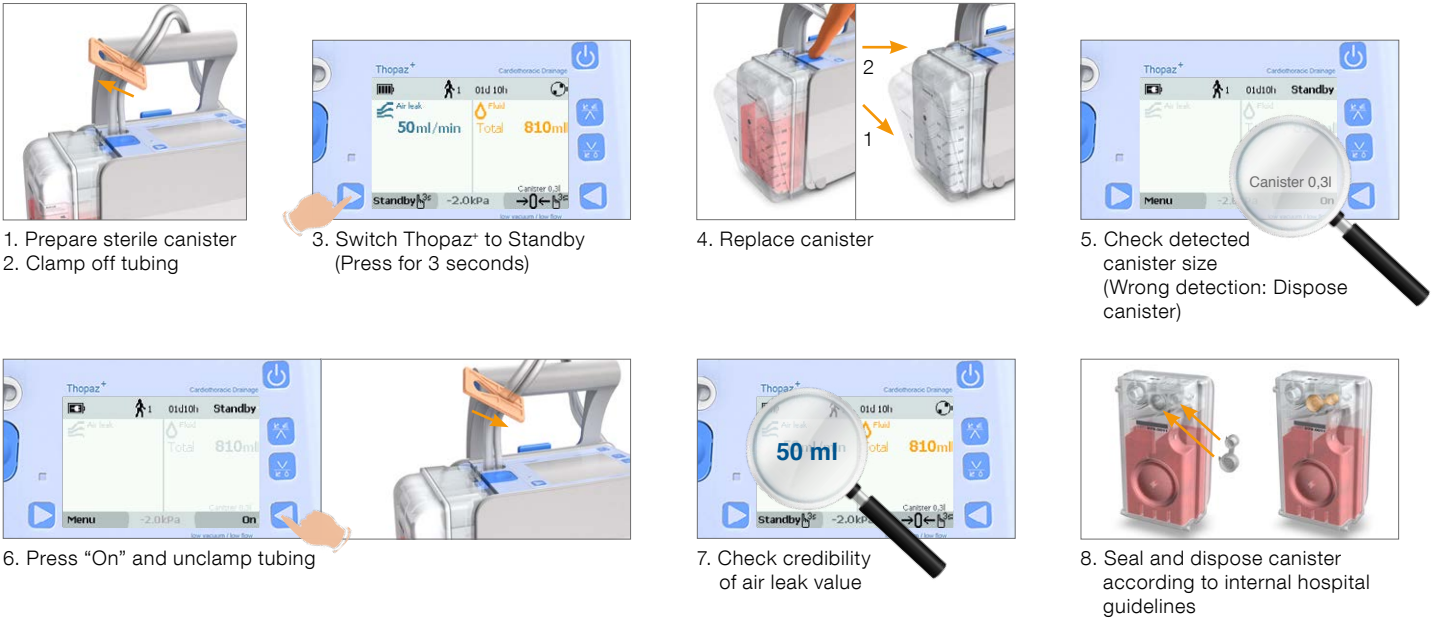
4. Scroll with "Next" through fluid graphs

6. Reset fluid display



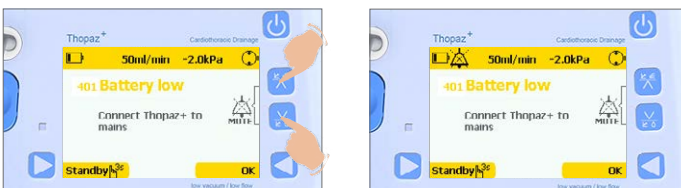
1. Press fluid reset button for 3 seconds
2. The timer shows when the parameter was last adjusted to zero. The display can be adjusted to zero at any time, if needed, by pressing the fluid history button for 3 seconds again.

7. Replace canister



1. Prepare sterile canister
2. Clamp off tubing
3. Switch Thopaz⁺ to Standby (Press for 3 seconds)
4. Replace canister
5. Check detected canister size (Wrong detection: Dispose canister)
6. Press "On" and unclamp tubing
7. Check credibility of air leak value
8. Seal and dispose canister according to internal hospital guidelines

8. Alarms



1. Press simultaneously to mute the acoustic alarm
2. Follow advice on screen

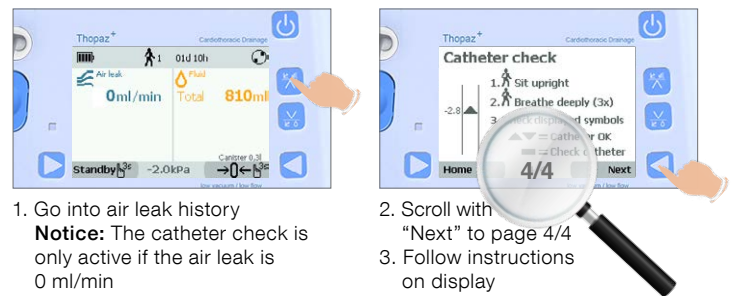
10. Switch off Thopaz⁺



1. Clamp off catheter
2. Clamp off tubing
3. Switch Thopaz⁺ to Standby (Press for 3 seconds)

9. Catheter check

Only use with a patient catheter (drain) in the interpleural place.



1. Go into air leak history
Notice: The catheter check is only active if the air leak is 0 ml/min
2. Scroll with "Next" to page 4/4
3. Follow instructions on display

